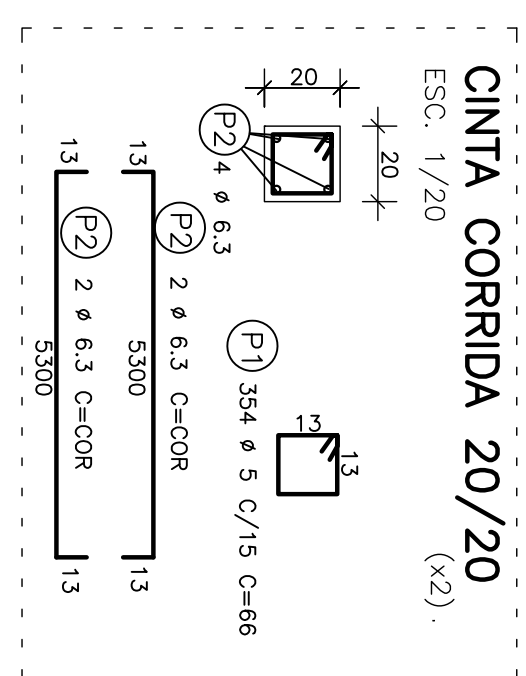


	CO	POS	BLF	QUANT	COMPARATIVO	TOTAL
S1	500	2	8	18	115	140
S2=S2	500	2	8	18	115	140
S3=S3	500	2	8	18	106	138
S4=S4	500	2	8	18	106	138
S5=S5	500	2	8	18	106	138
S6=S6	500	2	8	18	106	138
S7=S7	500	2	8	18	106	138
S8	500	2	8	18	106	138
S9	500	2	8	18	106	138
S10	500	2	8	18	106	138
S11	500	2	8	18	106	138
S12	500	2	8	18	106	138
S13	500	2	8	18	106	138
S14	500	2	8	18	106	138
S15	500	2	8	18	106	138
S16	500	2	8	18	106	138
S17	500	2	8	18	106	138
S18	500	2	8	18	106	138
S19	500	2	8	18	106	138
S20	500	2	8	18	106	138
S21	500	2	8	18	106	138
S22	500	2	8	18	106	138
S23	500	2	8	18	106	138
S24	500	2	8	18	106	138
S25	500	2	8	18	106	138
S26	500	2	8	18	106	138
S27	500	2	8	18	106	138
S28	500	2	8	18	106	138
S29	500	2	8	18	106	138
S30	500	2	8	18	106	138
S31	500	2	8	18	106	138
S32	500	2	8	18	106	138
S33	500	2	8	18	106	138
S34	500	2	8	18	106	138
S35	500	2	8	18	106	138
S36	500	2	8	18	106	138
S37	500	2	8	18	106	138
S38	500	2	8	18	106	138
S39	500	2	8	18	106	138
S40	500	2	8	18	106	138
S41	500	2	8	18	106	138
S42	500	2	8	18	106	138
S43	500	2	8	18	106	138
S44	500	2	8	18	106	138
S45	500	2	8	18	106	138
S46	500	2	8	18	106	138
S47	500	2	8	18	106	138
S48	500	2	8	18	106	138
S49	500	2	8	18	106	138
S50	500	2	8	18	106	138
S51	500	2	8	18	106	138
S52	500	2	8	18	106	138
S53	500	2	8	18	106	138
S54	500	2	8	18	106	138
S55	500	2	8	18	106	138
S56	500	2	8	18	106	138
S57	500	2	8	18	106	138
S58	500	2	8	18	106	138
S59	500	2	8	18	106	138
S60	500	2	8	18	106	138
S61	500	2	8	18	106	138
S62	500	2	8	18	106	138
S63	500	2	8	18	106	138
S64	500	2	8	18	106	138
S65	500	2	8	18	106	138
S66	500	2	8	18	106	138
S67	500	2	8	18	106	138
S68	500	2	8	18	106	138
S69	500	2	8	18	106	138
S70	500	2	8	18	106	138
S71	500	2	8	18	106	138
S72	500	2	8	18	106	138</

RESUMO AÇO CA 50-60			
AÇO	BIT (mm)	COMPR (m)	PESO (kg)
60	5	467	72
50A	6,3	426	104
50A	8	1187	473
Peso Total	60 =		72 kg
Peso Total	50A =		577 kg

NOTA:
CONFERIR INFORMAÇÕES DA TABELA ACIMA
NA OBRA ANTES DA COMPRA DAS ARMADURAS.



OBS: CONFERIR MEDIDAS NO LOCAL, SUBMETETER A ANALISE DE ENGENHEIRO RESPONSÁVEL.			
00	EMISSÃO MATRIZ	OUT 1997	
REV	MODIFICAÇÃO	DATA	RESP

[illegible]